



## Ballintubbert Gardens & House

### 14 acres of Garden Rooms surrounding an 18<sup>th</sup> Century Georgian Manor House

Georgian Manor | Living Garden Rooms | Lutyens Garden | Woodland Walks | Herb Garden | Accommodation

Located in a picturesque valley between the village of Stradbally and the town of Athy, Ballintubbert has a rich history in the heart of Laois. Built in 1725, this beautifully restored Georgian residence has wonderful literary and theatrical associations. Previous residents include renowned personalities such as C. Day-Lewis (Poet Laureate and father of actor Daniel Day-Lewis), actor Sebastian Shaw and actor Sir John Hurt.

The gardens at Ballintubbert are a series of Garden Rooms arranged symmetrically around the centrepiece of the simple Georgian manor house. The gardens have been developed since the 1850s and are continuing to develop following the Arts and Crafts tradition, using a series of living garden rooms to create an ever-changing journey through the grounds. Recently described as “An enchanting work of art-intimate and extraordinarily peaceful.” Highlights include:

- ❖ **Georgian Manor** | restored 18<sup>th</sup> Century Georgian Manor | Home of C. Day-Lewis
- ❖ **Theatrical Links** | home to actors Sebastian Shaw and Sir John Hurt
- ❖ **Literary Links** | birthplace of Poet Laureate Cecil Day-Lewis.
- ❖ **Garden Rooms** | a series of Garden Rooms creating a wonderful journey through the grounds
- ❖ **Lutyens Garden** | inspired by the Sir Edwin Lutyens designed garden | Heywood Gardens, Ballinakill, Laois
- ❖ **Baile an Tobair** | Irish for Ballintubbert; meaning Town of the Wells blessed with mineral rich water
- ❖ **Herb Garden** | recreation of the herb garden by former house resident, Darth Vader actor, Sebastian Shaw

## Ballintubbert Gardens and House | Schedule of Experiences

### General Experiences

Experience	Short Description	Min-Max Numbers	Duration	Price/Person Public Price
<b>Self-Guided Garden Tour</b>	Enjoy 14 acres of Gardens at your own pace	N/A	Approx. 1.5 hours	€XX per adult
				Children under 12 free
<b>Guided Tour with Head Gardener</b>	<ul style="list-style-type: none"> <li>❖ Guided tour with Head Gardener.</li> <li>❖ This tour includes the history of the gardens and their development.</li> </ul>	Min: 4 Max: 40	Approx. 2 hours	€XX
<b>Guided Tour with Head Gardener followed by tea &amp; scones in The Tabernacle</b>	<ul style="list-style-type: none"> <li>❖ Guided tour with Head Gardener.</li> <li>❖ This tour includes the history of the gardens and their development.</li> <li>❖ Followed by a choice of tea/coffee, herbal tea, with home-made scones, cream, jams, pasties.</li> <li>❖ This is served in The Tabernacle</li> </ul>	Min: X Max: XX	Approx. 3 hours	€XX

## Ballintubbert Gardens and House | Schedule of Experiences

### Premium Experiences

Experience	Short Description	Min-Max Numbers	Duration	Price/Person Public Price
<b>Guided Tour with Head Gardener followed by afternoon tea in Ballintubbert House</b>	<ul style="list-style-type: none"> <li>❖ Guided tour with Head Gardener.</li> <li>❖ This tour includes the history of the gardens and their development.</li> <li>❖ Followed by an afternoon tea with a choice of tea/coffee, herbal tea, mini scones, sandwiches, cakes and pastries. mini quiches and vol au vents.</li> <li>❖ This is served in the intimacy of the dining room in Ballintubbert House</li> </ul>	Min: X  Max: X	Approx. 2 hours	€XX
<b>Herbal Tincture Workshop</b>	<p>Discover the many uses of herbs. Prepare some tinctures under supervision. Learn how to make 3 or 4 different tinctures. For example, soaps, creams, herb oils, herb vinegars</p> <p><b>Inclusions:</b> Printed recipe cards, samples, freedom to explore garden</p>	Min 8  Max 20	Approx. 4 hours	€XX
<b>Foraging Workshop</b>	<p>Hedgerow and garden foraging walk with local guide, followed by cook-up and feasting on wild food-based dishes.</p> <p><b>Inclusions:</b> Discussion of 4-6 recipes, helpful tips on preparation. Tasting of each dish – sample-size portions. Small notebooks and pens provided. Leave with recipes</p>	Min 8  Max 20	Approx. 3 hours	€XX



# General Experience Descriptions

---

## Self-Guided Garden Tour

Relax and enjoy what is an experience of the senses. Explore the Robinson woodland walk which encircles the 120-metre formal canal and delight in the magnificent Arthur Shackleton designed garden room. Through the Yew cloisters, find the heart of Ballintubbert, the Sir Edwin Lutyens inspired sunken garden, complete with fountain and his trademark stone walls. Relax in the rose garden, surrounded by over 300 roses. Take in the view of the surrounding countryside from atop the 'Mound' on the Great Lawn.

---

## Guided Tour with Head Gardener

Meet Ballintubbert's Head Gardener who will take you on an historical journey of the gardens of Ballintubbert. Learn about the influence each of the residents had on these wonderful gardens including the Herb Garden originally developed by Dark Vader Actor, Sebastian Shaw. Highlights of these fascinating garden rooms include the Robinson woodland walk and canal, the magnificent Arthur Shackleton designed garden room, the Lutyens Garden with its' fountain and trademark stone walls and the Rose Garden with over 300 roses.

---



# General Experience Descriptions

---

## Guided Tour with Head Gardener, followed by tea & scones in the Tabernacle

Meet Ballintubbert's Head Gardener who will take you on an historical journey of the gardens of Ballintubbert. Learn about the influence each of the residents had on these wonderful gardens including the Herb Garden originally developed by Dark Vader Actor, Sebastian Shaw. Highlights of these fascinating garden rooms include the Robinson woodland walk and canal, the magnificent Arthur Shackelton designed garden room, the Lutyens Garden with its' fountain and trademark stone walls and the Rose Garden with over 300 roses. End with a choice of teas or coffee, served with home-made scones in The Tabernacle.



# Premium Experience Descriptions

---

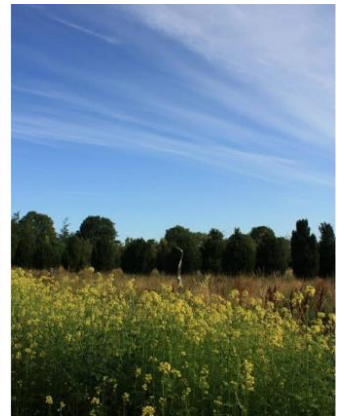
## Guided Tour with Head Gardener, followed by afternoon tea in Ballintubbert House

Meet Ballintubbert's Head Gardener for an historical journey of the gardens at Ballintubbert. Learn about the influence each of the residents had on these wonderful gardens including the Herb Garden originally developed by Dark Vader Actor, Sebastian Shaw. Highlights of these fascinating garden rooms include the Robinson woodland walk and canal, the magnificent Arthur Shackelton designed garden room, the Lutyens Garden and the Rose Garden. End with a rare opportunity to enjoy an intimate afternoon tea in Ballintubbert House including a choice of teas or coffee, served with dainty sandwiches and other savoury delights.

---

## Herbal Tincture Workshop

During this workshop, discover the many different herbs growing in Ballintubbert's Herb Garden which was originally developed by self-practising herbalist and Dark Vader Actor, Sebastian Shaw. Learn about the properties of the different herbs and their uses. After harvesting some herbs, learn how to prepare three to four different tinctures. These might include soaps, creams, herb oils and herb vinegars. Once you have learned to prepare a tincture from fresh herbs, you will have the skills to manage your own well-being by preparing tinctures on your own.





# Premium Experience Descriptions

---

## Foraging Workshop

During this experience, guests are led by a local guide and wild food expert to embrace nature on a hedgerow and garden foraging walk. Learn to identify diverse plants and understand their medicinal and nutritional qualities. After the walk, return to the kitchen in The Tabernacle where you will learn how to prepare and cook with wild ingredients. In this fun and intimate environment, enjoy a cook up feast of wild food, with the opportunity to taste each of the dishes prepared.



## Ballintubbert Gardens and House | General Information

---

- ❖ **Bookings:** please contact 353 87 312 7639 or  
Email – Garden Enquiries - [ballintubbertgarden@gmail.com](mailto:ballintubbertgarden@gmail.com)  
Accommodation/event enquiries – [myhost@ballintubbert.com](mailto:myhost@ballintubbert.com)
  
- ❖ **Opening Dates and Times:**
  - Open From 2<sup>nd</sup> April to 2<sup>nd</sup> October
  - Open Tuesday and Wednesday only from 10.00 to 17.00
  
- ❖ **Accommodation:**
  - The Georgian House can be booked exclusively as well as accommodation in the School House and Garden Wing
  
- ❖ **Eircode:** R14 E954

